

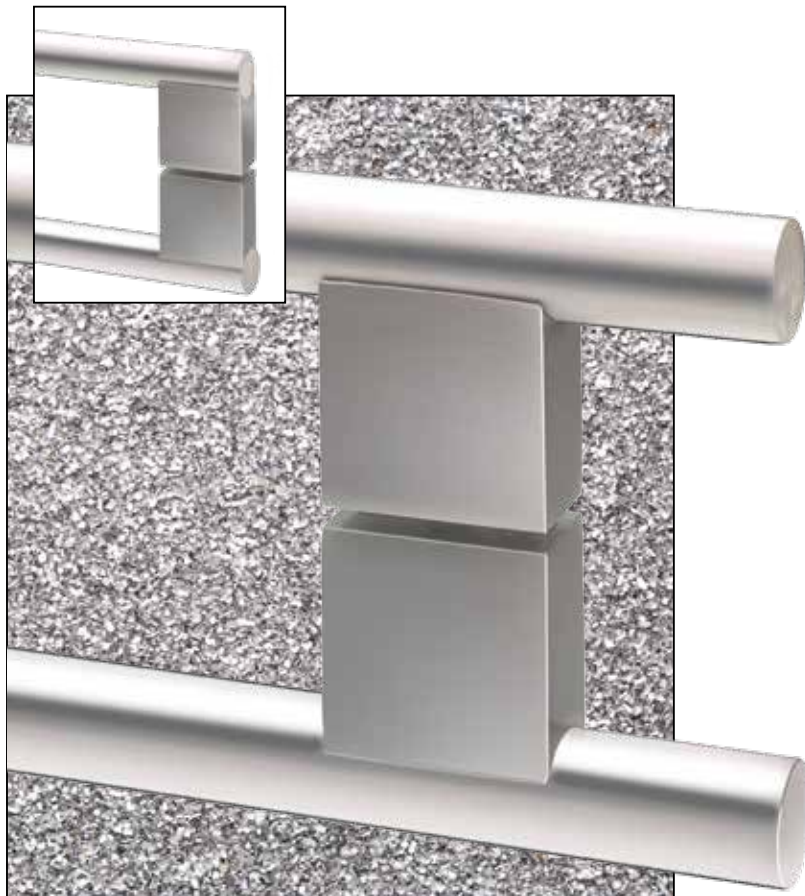


PRODUCT SPECIFICATION

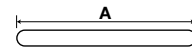
BB156 BB256

Made to Measure Back-to-Back Handles

Sydney Head Office Phone: (02) 9542 4991
 Sydney Head Office Fax: (02) 9542 4662
 Brisbane 0400 494 368
 Melbourne 0409 578 885
 Auckland: 021 964 600
 Email: sales@kethy.com

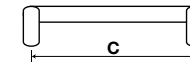


Material:	Architectural 6060 grade anodised aluminium
Article Number:	See diagram below / reference C / colour



A

To suit your specification



C

To suit your specification



P

40



W

15

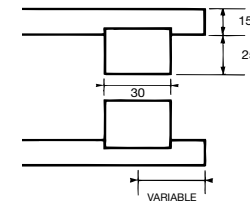
The Back to Back joining pin is made from stainless steel and will fit doors up to 45mm thick. All lengths are made to order with the positioning of the foot specified to your needs.

A centre foot is recommended for longer handles.

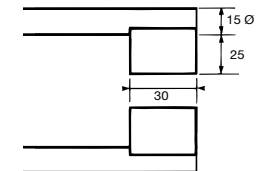
Colours available:

	INOX	MATT
BAR	√	√
Square 30mm FEET	√	N/A

BB156 Foot Inset



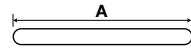
BB256 Foot Flush



Maximum overall length 2020mm

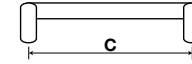


Material:	Architectural 6060 grade anodised aluminium
Article Number:	See diagram below / reference C / colour



A

To suit your specification



C

To suit your specification



P

40



W

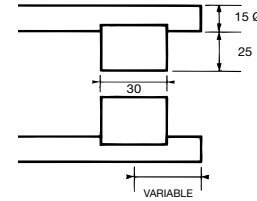
15

The Back to Back joining pin is made from stainless steel and will fit doors up to 45mm thick. All lengths are made to order with the positioning of the foot specified to your needs.
A centre foot is recommended for longer handles.

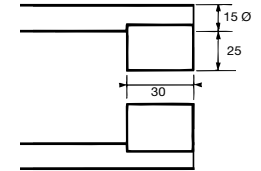
Colours available:

	INOX	MATT
BAR	√	√
Square 30mm FEET	√	N/A

BB156
Foot Inset



BB256
Foot Flush



Maximum overall length 2020mm