



Kethy

K1050

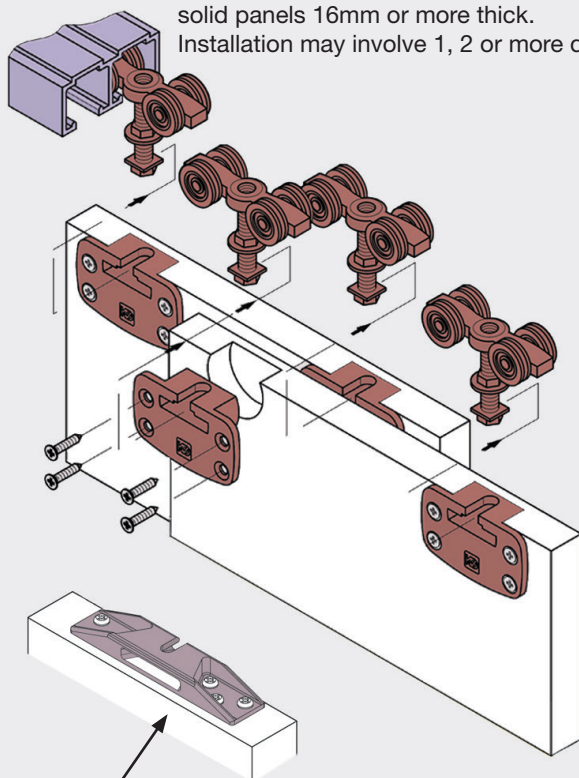
SLIDING DOOR FITTINGS

Top Sliding System

European Quality

Multiple Options for
Bottom Guide

K1050 installation uses routed-in alloy mounting brackets, for positive fixing in solid panels 16mm or more thick. Installation may involve 1, 2 or more door runs.



Optional top mounting bracket for doors 30mm or more thick. Order as item K0500/55, 2 per door, in addition to standard kit

80kg Doors Capacity

Roller kits and track sold separately

Order as:
K1050/2 80kg kit - 1 per door
K0500/55 - Optional top mounting bracket - 2 per door
K0500/1 Track - 1 x width of opening for each run of doors
K0500/4 Optional side mount for track (optional) space every 300-400mm

Bottom Guide - selected option - see over

Kit contains:
2 x Upper roller and bracket

2 x Stop brake

Upper Track:
matt anodised aluminium,
sold per metre, in 6 metre lengths

K0500/4 track side mount

GREG STEELE TRADING PTY. LTD.

UNIT 15, 29/33 WARATAH STREET, KIRRAWEE, NSW, 2232 PHONE: 02 9542 4991 FAX: 02 9542 4662 www.kethy.com

K1050 BOTTOM GUIDE FITTINGS

The European-engineered K1050 top sliding system uses precision, heavy duty ball bearing rollers to provide very smooth operation for door weights up to 80kg.

The top-hung configuration allows a variety of options for the bottom guide arrangement, to suit different requirements for access.

The options with a continuous bottom track allow 3 or more doors to travel the full width of the opening, using either a neat recessed bottom track (K0310) or an easy-to-fit, surface mounted bottom track (K0320).

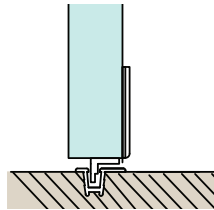
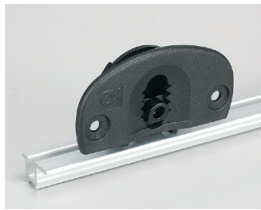
K0320 NO LONGER AVAILABLE

In situations where there is a need to avoid having a track at the bottom, the fin guide (timber doors only) and the bollard guide provide two design options. They allow each door to travel across almost two door widths of opening and this door travel can be easily set by positioning the stop brakes in the top track.

Please confirm your weight handling requirements when ordering.

Options for Bottom Guide

K0310 Recessed Guide



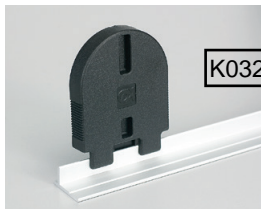
Recessed full width track.

Order as:

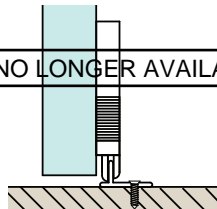
K0310/6 kit –1/door

K0310-TF track, same lengths as for upper track.

K0320 Exposed Guide



K0320 NO LONGER AVAILABLE



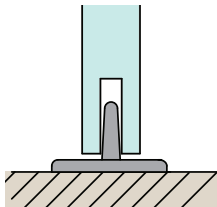
Surface-mounted full-width track.

Order as:

K0320/8 kit –1/door

K0320-TF track, same lengths as for upper track.

Lower Fin Guide



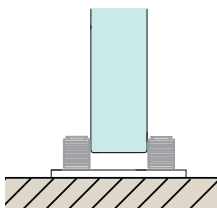
Black nylon fin.

Bottom track not needed but doors restricted to 2 x door width travel.

Order as:

K0810/80x800 – 1 per door

Stainless Bollard



Guide posts on round stainless steel plate.

Bottom track not needed but doors restricted to 2 x door width travel.

Order as:

K1051– 1 per door

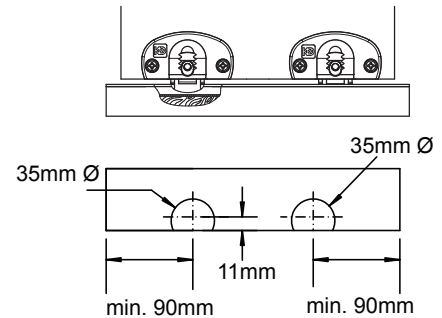
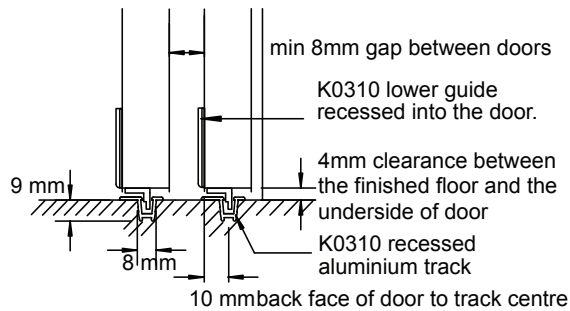
GREG STEELE TRADING PTY. LTD.

K1050 BOTTOM GUIDE FITTINGS

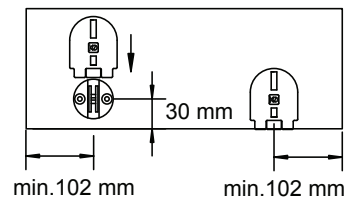
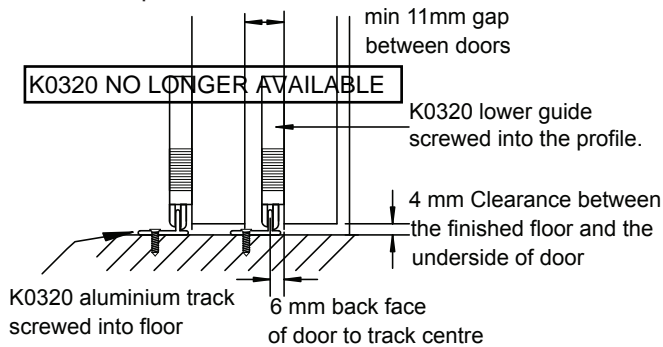
The technical details shown here will help you selecting the bottom guide that most suites your requirements.

Please note that the two systems K0310 guide and K0320 guide require a timber base plate to accept the aluminium bottom track, as a result they provide a particularly strong and stable guide especially suited for wider doors.

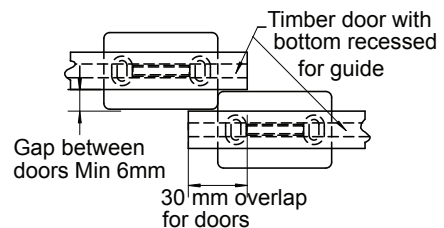
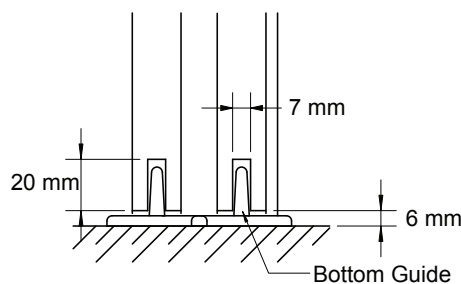
K0310 Recessed Guide



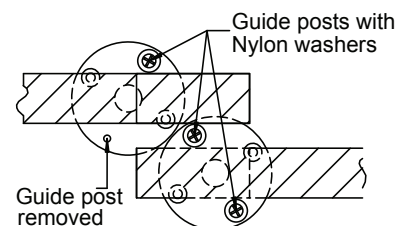
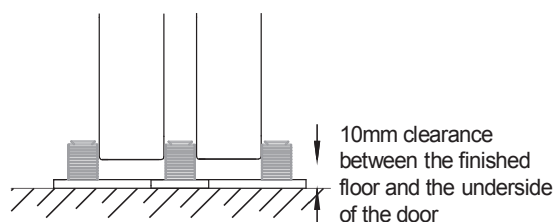
K0320 Exposed Guide



Lower Fin Guide



Stainless Bollard



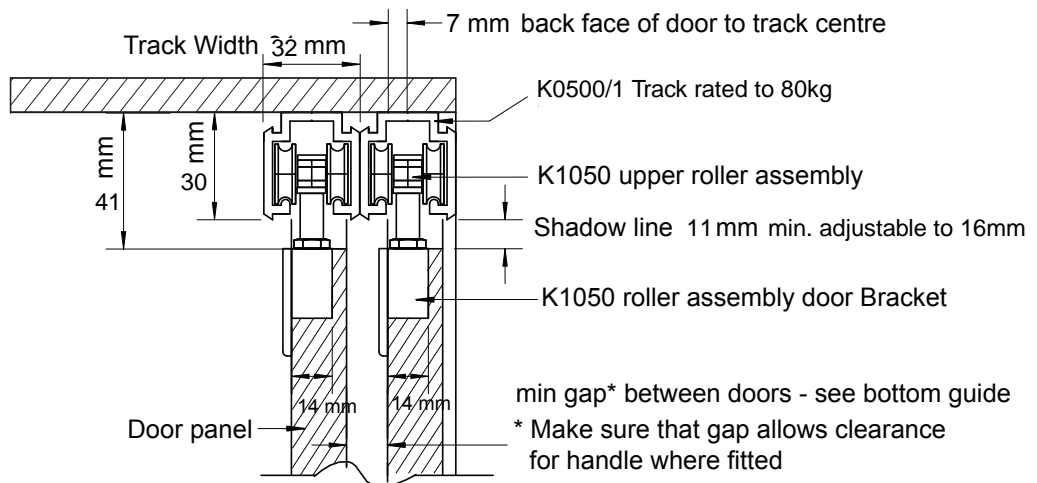
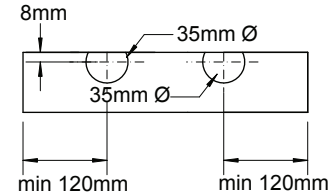
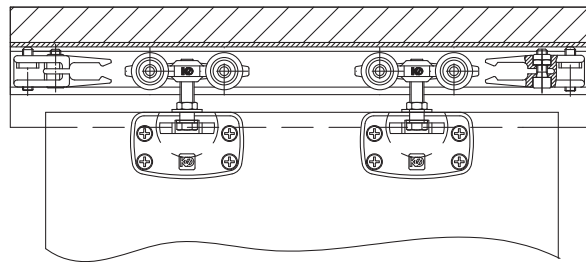
GREG STEELE TRADING PTY. LTD.

UNIT 15, 29/33 WARATAH STREET, KIRRAWEE, NSW, 2232 PHONE: 02 9542 4991 FAX: 02 9542 4662 www.kethy.com

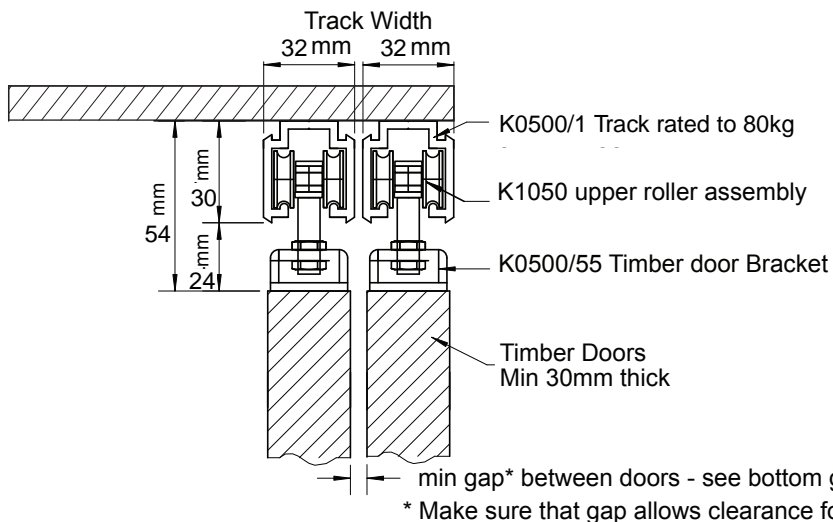
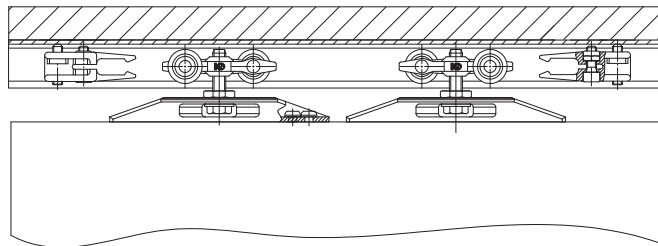
K1050 SLIDING DOOR FITTINGS

To satisfy the requirements of all door thicknesses, two solutions are available; the standard fitting for use on solid board doors where attaching directly to the top is not satisfactory and the strong nylon top fitting for doors over 30mm thick.

Standard Fitting For 16-25mm Solid Doors



Optional Fitting For 30mm+ Doors



GREG STEELE TRADING PTY. LTD.